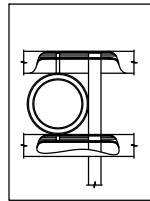


NOTES:

- 1.) Post size depends on fence height and wind loads. See ECHELON Plus™ post sizing chart.
- 2.) Panels also available for 6' on center post spacing
- 3.) Additional heights available on request
- 4.) Fourth rail optional.

RING OPTION

Held in place with upper and lower internal retaining rods to eliminate unsightly external fasteners.

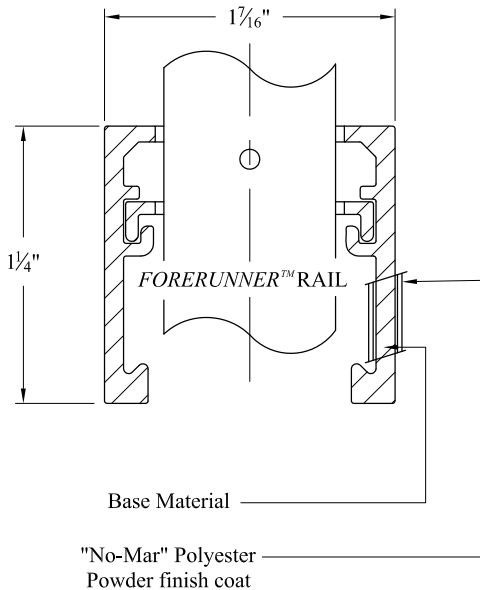


PANEL BRACKET

Specially designed two-point connection ensures fixity of rail ends for increased strength.

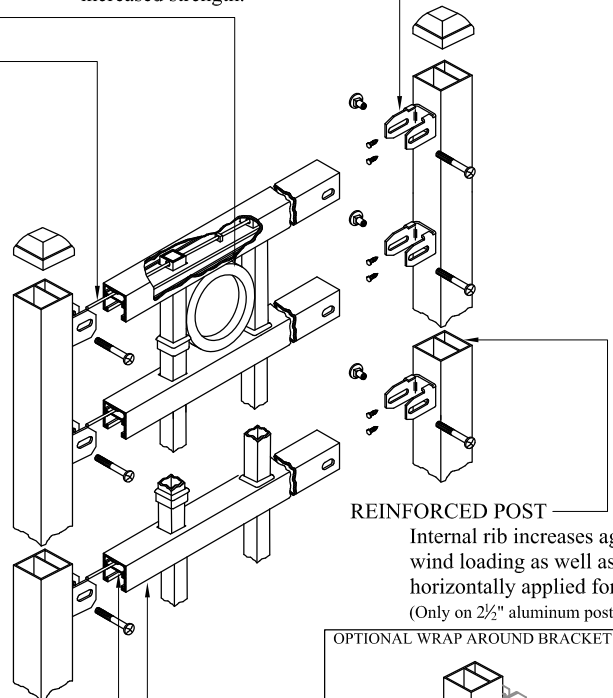
INTERNAL RETAINING ROD

Variable pitch connection system for ease of installation, high angle bias ability and elimination of unsightly external fasteners.



Base Material

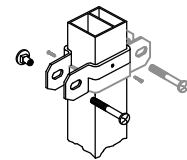
"No-Mar" Polyester Powder finish coat



REINFORCED POST

Internal rib increases against wind loading as well as other horizontally applied forces (Only on 2 1/2" aluminum posts).

OPTIONAL WRAP AROUND BRACKET



INTERIOR GUIDE CHANNEL
Channel forms lower limit of raceway for retaining rod and allows for high angle bias ability.

FORERUNNER™ RAIL
"U"-Channel specially formed high strength architectural shape.

COMMERCIAL STRENGTH ALUMINUM

Title: **ECHELON PLUS MAJESTIC 3/4-RAIL W/RING OPTION**

DR: NJB	SH . 1 of 1	SCALE: DO NOT SCALE
CK: CI	Date 03/26/09	REV: b



AMERISTAR®

1555 N. Mingo
Tulsa, OK 74116
1-888-333-3422
www.ameristarfence.com