



# FENCE & WIRE

---

## PRODUCTS



QUALITY FENCE AND WIRE PRODUCTS FOR FARM, RANCH AND HOME

# TREE ISLAND INDUSTRIES

YOUR ASSURANCE OF QUALITY, VALUE AND SERVICE

**QUALITY**

**SERVICE**

**VALUE**



Tree Island is a leading manufacturer of fence and wire products in Western North America. The company's facility in Richmond, British Columbia, is one of the most technologically advanced mills on the continent for producing quality fence and wire products.

Our prime focus at Tree Island is to add value to all of our products: efficient production helps us keep costs down; a diversity of products makes us a one-stop supplier for all your fence and wire needs; our huge supply of stock ensures that we can always have the product you need, when you need it.

We pride ourselves on service and have the ingenuity to help you cost-effectively solve any fencing problem.

Your assurance of quality is that all our products are backed by a full replacement guarantee.



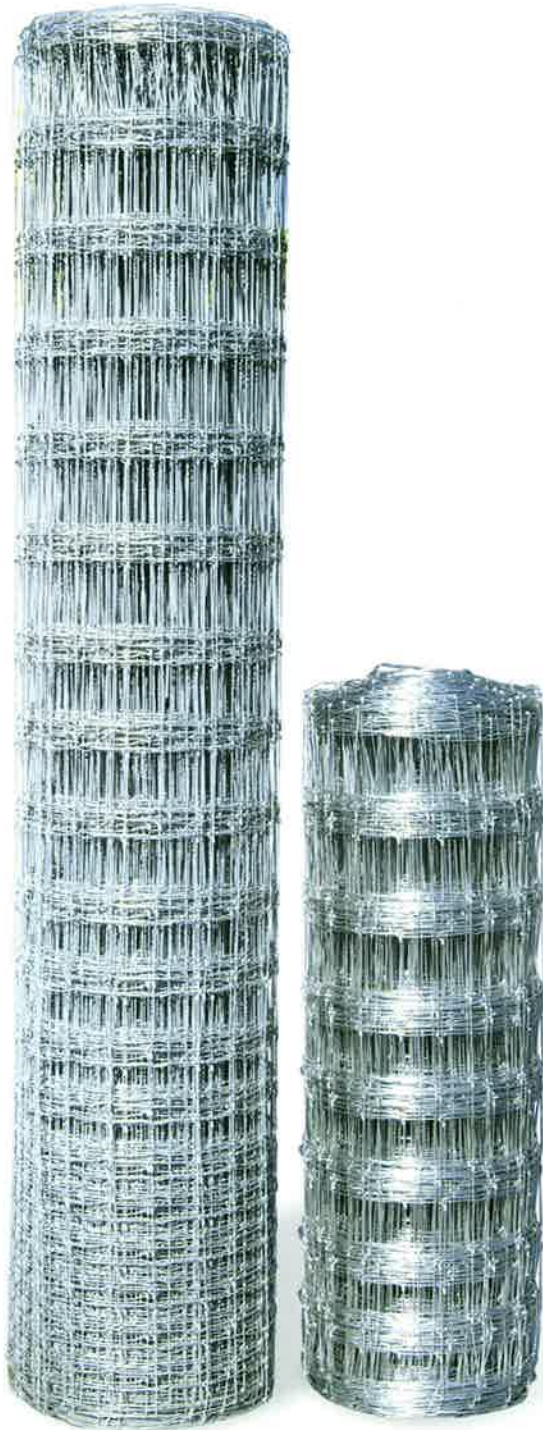
## CONTENTS

Fence Products . . . . .	2,3 & 4
Wire Products . . . . .	5 & 6
Construction Accessories . . . . .	7 & 8
Specifications . . . . .	9 & 10



T R E E I S L A N D I N D U S T R I E S

# FIXED-KNOT GAME FENCE



## FIXED-KNOT GAME FENCE

Tree Island has added fixed-knot game fence to its product mix.

This is a high tensile fence with a fixed-knot, which holds the vertical stay wires securely in place, unlike any other fence made.

The Class III galvanized coating can last up to 25 years.

Game fence is available in many sizes and wire spacings.

The range in height is from 42" to 96" and the rolls are 20 rod (330') or 40 rod (660') in length.



# FENCING PRODUCTS



## FARM AND RANCH FENCE

This galvanized woven field fence is perfect for enclosing corrals and pastures. Featuring flexible hinge joints, it conforms to the landscape and minimizes damage caused by livestock and weather. Strong enough to withstand abuse from horses, cattle and falling tree limbs.

Available in a variety of heights from 26" to 55" with 6" or 12" spacing. Tree Island farm and ranch fence comes in 20 ROD rolls (330').

**Standard** - 10 gauge top and bottom wires, with 12½ gauge filler. Available in commercial galvanization.

**High Tensile** - 12½ gauge top and bottom wires with 14 gauge filler. Made of stronger steel, high tensile provides the same strength as standard fence in a lighter gauge wire. Available in Class III galvanization.

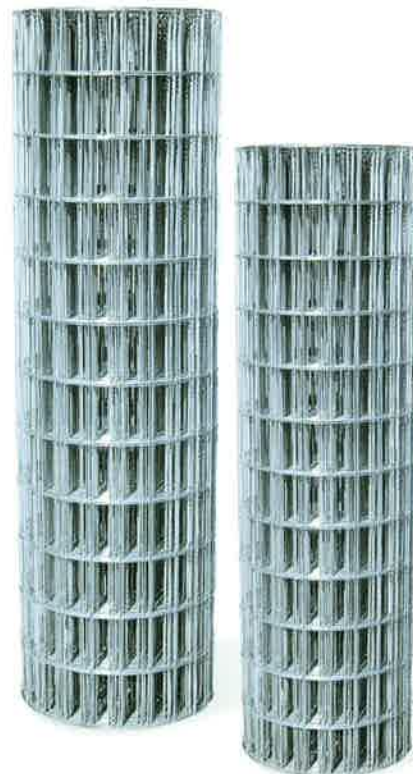
Class III farm and ranch fence meets or exceeds ASTM A-116.

## UTILITY FABRIC

An economical, multi-use welded fencing suitable for a variety of farm and home applications. Common uses include pet enclosures, fences, tree guards, cages, shade panels and machine and window guards.

Utility fabric heights range from 12" to 72" with several different openings available.

Galvanized to inhibit rust, it is also ideal for concrete reinforcement of patios or walkways. Wire can be easily cut, bent and fabricated to meet exacting needs. Special mesh sizes can be produced to order.



T R E E I S L A N D I N D U S T R I E S

# FENCING PRODUCTS



## GARDEN FENCE

Easy to work with, this lightweight welded fence is perfect for enclosing gardens. Variable spacing design keeps the smallest of animals away from plants. Ideal for tomato cages, the fruit is easily accessible through the larger gaps in the upper mesh.

Available in 35" x 50' rolls.

## LAWN FENCE

A durable welded fence suitable as permanent boundary fencing in nearly any application. An extra heavy coating of zinc (Class III) protects this sturdy fence from corrosion over the long term. Scientifically designed tension curves prevent the fence from sagging and help drain moisture.

Constructed from 12½ gauge wire, lawn fence is available in a variety of heights. Fence grid is 4" x 2".

Class III coating.



# WIRE PRODUCTS



## BARBED WIRE

Designed to provide superior corrosion resistance and durability, Tree Island barbed wire survives the most demanding ranch conditions. Sturdy cables of galvanized steel are carefully stranded to stretch taut for strong confinement. Sharp barbs are evenly spaced and tightly fastened to strand wires.

Available in 12½ gauge galvanized (Commercial or Class III) and 15½ gauge high-tensile reverse twist (Class III). All barbed wire is furnished in eighty rod spools (1320') on an easy to handle wooden reel. Twisted barbless cable is also available. All Class III barbed wire meets or exceeds ASTM A-121.

## HIGH TENSILE FENCE WIRE

Easy to string and handle, you can save considerable time and money with this low cost fencing alternative. Suitable for use as a permanent electrical or non-electrical fence. High elasticity and high breaking strength (1385 lbs.) practically eliminate damage done by livestock, falling objects and temperature changes.

Studies show that high-tensile wire fencing is up to 20% cheaper to install than alternative fence systems, is easier to put up, safer for livestock and requires less maintenance.

Available in 12½ gauge galvanized (Class III) on wooden reels and coils.

Meets or exceeds ASTM A-854 Grade 180.



# T R E E I S L A N D I N D U S T R I E S

# WIRE PRODUCTS



## ELECTRIC FENCE WIRE

Ideal for adding extra security to existing conditions, or for creating low cost temporary fencing and grazing enclosures.

Galvanized to inhibit rust, it is available in 14, 16 and 17 gauge on handy dispensing metal spools in ¼ and ½ mile lengths.

## MERCHANT WIRE COILS

Soft and flexible, it is ideal for all-purpose tying around the farm and home.

Available in 9 to 17½ gauge, annealed or galvanized. Merchant wire is produced in 10 lb. and 50 lb. coils.



## VINEYARD WIRE

Manufactured to meet high-tensile specifications, vineyard wire is designed exclusively for trellising grapes, raspberries and other fruit. Ideally suited for mechanical harvesting, this galvanized wire (Commercial or Class III) is available in a variety of gauges and tensiles.



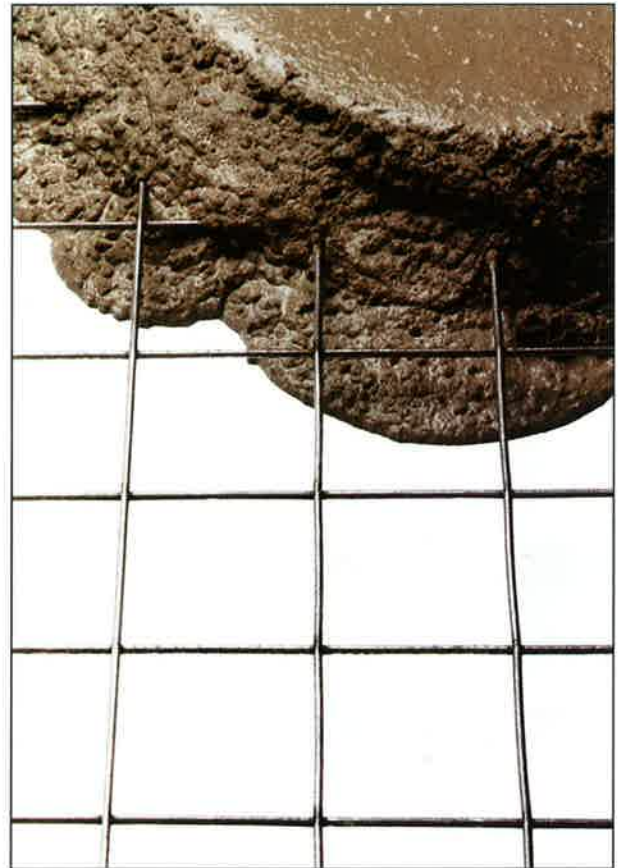
# CONSTRUCTION ACCESSORIES



## STUCCO MESH

This welded, galvanized 2" x 2" mesh is ideal for all interior and exterior stucco, masonry and plaster applications. Easy to handle, Tree Island stucco mesh rolls out flat and stays flat, providing a positive bonding surface.

Produced from 16 gauge wire with 1/4" self-furring crimps, the product is easy to work with and galvanized for excellent rust resistance. 50 square yards standard rolls (450 ft<sup>2</sup>.) are available in 48" or 54" widths.



## BUILDING FABRIC

Easier to use than rebar, building fabric provides effective concrete reinforcement for heavy-duty projects including driveways, walkways, floors, water tanks and pools. Simply lay down the fabric and you're ready to pour concrete.

Welded wire fabric is available in 4 to 10 gauge and is produced in a variety of sizes of rolls and sheets. Fabric spacing available in 4" x 4", 6" x 6", 12" x 12" spacing.



T R E E I S L A N D I N D U S T R I E S

# CONSTRUCTION ACCESSORIES



## REBAR TIE WIRE

Flexible Tree Island rebar tie wire is specially annealed to be soft and easy to twist, yet is strong enough to securely tie concrete reinforcement bars or welded wire fabric.

Available in 16 and 16½ gauge with either an annealed or polycoated finish. Coils are adapted to fit standard dispensing reels and are packed in 16 or 20 coil cartons. Other gauges are available by special order.

## STAPLES

Tree Island poultry and fence staples feature uniform points and barbed shanks to maximize ease of driving and holding power.

Staples are available from ¾" to 2" to suit almost any fencing application.



## NAILS

### Common, Box, Finishing, Duplex, Roofing, Flooring and Spiral Nails

Tree Island operates one of the most modern nail mills in North America and produces over 400 types, sizes and finishes of nails for the construction and consumer markets.

All nails are magnetically packed for ease of storage and for easier handling on the job. Finishes available include bright, blued, electro-galvanized, hot galvanized, vinyl coated, blue vinyl and temper hardened.



# SPECIFICATIONS

FIXED-KNOT GAME FENCE						
STYLE	HORIZONTAL LINE WIRES	HEIGHT	STAY WIRE SPACING	ROLL LENGTH	WEIGHT	
2096-6-330	20	96"	6"	330'	409 lbs.	
1796-6-330	17	96"	6"	330'	367 lbs.	
*1775-6-330	17	75"	6"	330'	337 lbs.	
1348-6-330	13	48"	6"	330'	243 lbs.	
1060-6-330	10	60"	6"	330'	217 lbs.	
949-6-330	9	49"	6"	330'	188 lbs.	
2096-12-330	20	96"	12"	330'	292 lbs.	
1796-12-330	17	96"	12"	330'	258 lbs.	
1775-12-330	17	75"	12"	330'	243 lbs.	
1248-12-660	12	48"	12"	660'	333 lbs.	
1060-12-660	10	60"	12"	660'	305 lbs.	
949-12-660	9	49"	12"	660'	266 lbs.	

FARM AND RANCH FENCE							
	STYLE	HORIZONTAL WIRES	HEIGHT	LINE/STAY WIRE	EDGE WIRE	ROLL LENGTH	WEIGHT
STANDARD	726-6-12½	7	26"	12½	10	330'	125 lbs.
	832-6-12½	8	32"	12½	10	330'	144 lbs.
	939-6-12½	9	39"	12½	10	330'	165 lbs.
	1047-6-12½	10	47"	12½	10	330'	187 lbs.
	1155-6-12½	11	55"	12½	10	330'	208 lbs.
	832-12-12½	8	32"	12½	10	330'	113 lbs.
	939-12-12½	9	39"	12½	10	330'	127 lbs.
	1047-12-12½	10	47"	12½	10	330'	141 lbs.
HIGH TENSILE CLASS III	832-6-14	8	32"	14	12½	330'	94 lbs.
	939-6-14	9	39"	14	12½	330'	107 lbs.
	1047-6-14	10	47"	14	12½	330'	122 lbs.
Zinc Coating: Commercial or Class III Galvanizing							

UTILITY FABRIC						
	STYLE	MESH SIZE	GAUGE	HEIGHT	WEIGHT 100' ROLL	WEIGHT 50' ROLL
HEAVY	1036-2-12½	4"x 2"	12½	36"	69 lbs.	34 lbs.
	1348-2-12½	4"x 2"	12½	48"	90 lbs.	45 lbs.
	1660-2-12½	4"x 2"	12½	60"	112 lbs.	56 lbs.
	1972-2-12½	4"x 2"	12½	72"	134 lbs.	67 lbs.
STANDARD	724-2-14	4"x 2"	14	24"	33 lbs.	—
	1036-2-14	4"x 2"	14	36"	46 lbs.	23 lbs.
	1348-2-14	4"x 2"	14	48"	62 lbs.	31 lbs.
	1660-2-14	4"x 2"	14	60"	77 lbs.	39 lbs.
	1972-2-14	4"x 2"	14	72"	92 lbs.	46 lbs.



# SPECIFICATIONS

GARDEN FENCE						
STYLE	HORIZONTAL WIRES	HEIGHT	LINE WIRE	STAY WIRE	ROLL LENGTH	WEIGHT
1835-4-14	18	35"	14	14	50'	25 lbs.

LAWN FENCE					
STYLE	MESH SIZE	GAUGE	HEIGHT	ROLL LENGTH	WEIGHT
1036-2-12½	4"x 2"	12½	36"	100'	69 lbs.
1348-2-12½	4"x 2"	12½	48"	100'	90 lbs.
1660-2-12½	4"x 2"	12½	60"	100'	112 lbs.
1972-2-12½	4"x 2"	12½	72"	100'	135 lbs.
Class III Galvanizing					

HIGH TENSILE FENCE WIRE						
STYLE	GAUGE	LENGTH	ZINC COATING	MIN. TENSILE	BREAKING LOAD	WEIGHT
50 lb. Coils	12½	1910'	Class III	180,000 psi.	1385 lbs.	50 lbs.
100 lb. Coils	12½	3820'	Class III	180,000 psi.	1385 lbs.	100 lbs.
Wooden Reels	12½	3750'	Class III	180,000 psi.	1385 lbs.	96 lbs.

BARBED WIRE							
	STYLE	POINTS	BARB SPACING	BARB SHAPE	ROLL LENGTH	NET WEIGHT	GROSS WEIGHT
STANDARD	12½	2	4"	Round	1320'	74 lbs.	77 lbs.
	12½	4	5"	Round	1320'	81 lbs.	84 lbs.
	12½	4	6"	Round	1320'	81 lbs.	84 lbs.
	Barbless	None	None	None	1320'	65 lbs.	68 lbs.
HIGH TENSILE CLASS III	15½	2	5"	Flat	1320'	40.5 lbs.	43.5 lbs.
	15½	4	5"	Round	1320'	40.5 lbs.	43.5 lbs.
Zinc Coating: Commercial or ASTM Class I or Class III Galvanizing							

WIRE GAUGE	
9 GA.	●
10 GA.	●
11 GA.	●
12.5 GA.	●
14 GA.	●
14.5 GA.	●
16 GA.	●
17 GA.	●
18 GA.	●
20 GA.	●

ACREAGE GUIDE				
Number of rods of fence required to enclose fields of different sizes				
.5 mile or 160 rods	.5 mile or 160 rods		.25 mile or 80 rods	
	.5 mile or 160 rods	<b>160 ACRES</b> Requires 2 miles or 640 rods of fence to enclose.	.5 mile or 160 rods	<b>80 ACRES</b> Requires 1.5 miles or 480 rods of fence to enclose.
	.5 mile or 160 rods		.25 mile or 80 rods	
			.5 mile or 160 rods	40 rods <b>20 ACRES</b> .75 mile or 240 rods 40 rods <b>10 ACRES</b> 160 rods
				20 rods <b>5 ACRES</b> 120 rods 40 rods <b>10 ACRES</b> 160 rods .25 mile or 80 rods <b>40 ACRES</b> Requires 1 mile or 320 rods of fence to enclose.
				.25 mile or 80 rods

